

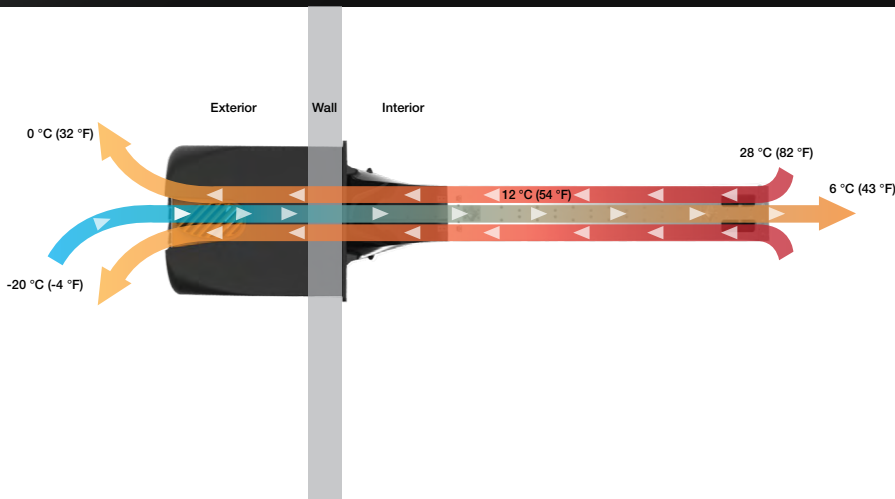
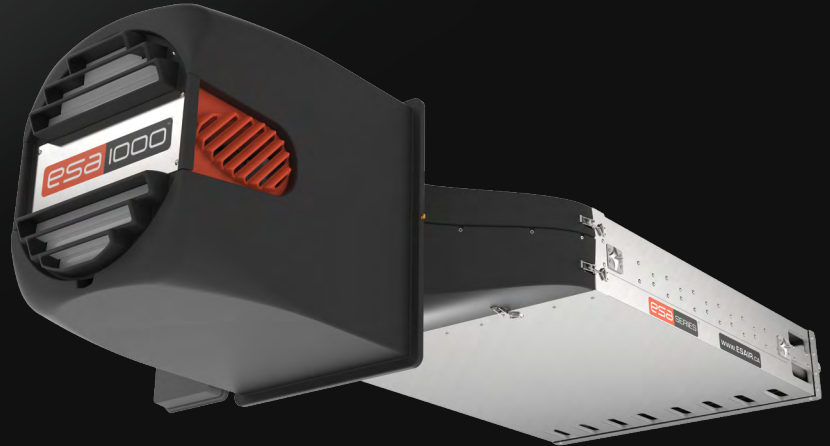


DESIGNED FOR AGRICULTURE

HEAT RECOVERY VENTILATOR

## WHAT IS A HEAT RECOVERY VENTILATOR?

A heat recovery ventilator is a fan that preheats the air coming into a building by using the energy within the stale warm air that is usually expelled outdoors. By placing the air conduits side-by-side - without mixing the airflows together - the outgoing air transmits its heat to the incoming air. Once the incoming air has travelled through the heat exchanger and enters the building, its temperature has already increased by up to 50%. This technology saves energy and helps prevent detrimental cold drafts on the animals.



## HOW DOES IT WORK?

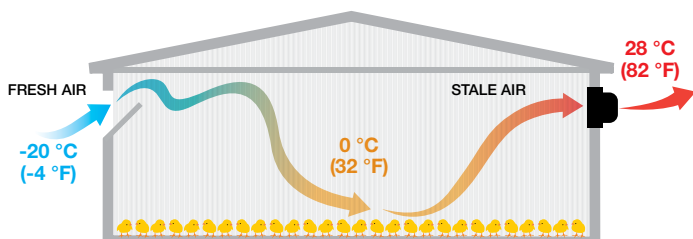
The **ESA-1000** preheats the air coming into a building by using the warm air that is usually expelled outdoors. Installing an **ESA-1000** unit is a cost-effective investment as you quickly recoup your investment thanks to the money you save and your increased yields.



*ESA-1000 is optimized for several types of farming.*

### Conventional building

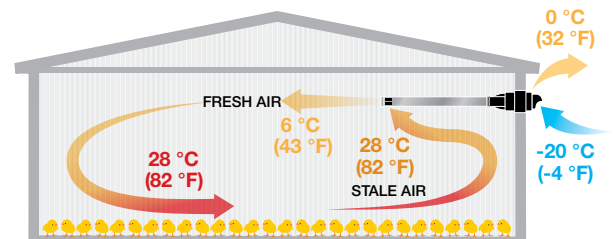
Increased heat loss in winter



Winter ventilation brings several challenges related to the intake of cold air.

### Building with ESA-1000

Up to 50% reduction in heating costs



ESA-1000 heat recovery ventilators improve air distribution and reduce cold drafts on animals.

## WHY DO I NEED A HEAT RECOVERY VENTILATOR?

- **It pays for itself:** quickly recover your investment thanks to the money you save and the increase in your production.
- **Lowers heating costs by up to 50%.**
- Helps reduce cold drafts on the animals for **improved animal activity and health.**
- Provides **minimum ventilation with better air circulation, which reduces your levels of CO<sub>2</sub>, humidity and ammonia.**
- Decreases your greenhouse gas emissions by up to **50% by reducing your heating needs.**

## WHAT SHOULD I LOOK FOR WHEN BUYING A HEAT RECOVERY VENTILATOR?

- Quick and simple installation
- Quick and easy maintenance
- Visual monitoring of its performance
- Neutral pressure, balanced inflow and outflow
- Compatible with existing ventilation controls
- Tolerant to extreme cold temperatures

## WHY IS THE ESA-1000 THE BEST CHOICE FOR ME?

- It is designed specifically for the **most difficult conditions**, such as we find in the agriculture industry.
- With over **7 years of R&D**, our heat recovery ventilators are among the best on the market.
- The **unique three-piece modular design** of the ESA-1000 makes the installation as easy as 1-2-3.
- Just unclip and remove the cartridge for a quick **5-minute power wash.**
- Each unit comes with its own controller, which allows for **continuous monitoring** of its performance.
- The ESA heat recovery ventilator exhausts the same amount of air as it takes in, ensuring that there are **no changes in pressure.**
- With its **patent pending technology**, the ESA-1000 heat recovery ventilator uses a single motor for both the incoming and outgoing air flows.
- A built-in **Auto-Defrost cycle** allows it to operate in the most extreme cold conditions.

- The ESA-1000 has already proven itself in many different locations.
- It **operates in several modes:** standalone, manual or variable, all operated by your existing ventilation controls.
- A ESA-1000 heat recovery ventilator **reduces the greenhouse gases produced by your heating system by up to 50%!**
- Compatible with **ECsmart** motors\*.

\*ECsmart is a trademark of Canarm Ltd.



*"Since my ESA-SERIES units have been installed, I've had my best poultry breeding results in years."*

Stephane Forest, The Great Elm Farm, Ste-Melanie, Quebec, Canada



**esa**

ÉNERGIE SOLUTIONS AIR  
ENERGY SOLUTIONS AIR

**Energy Solutions Air**  
400, Marquette Street  
Sherbrooke (QC) J1H 1M4  
Canada

facebook.com/ESAir.ca

[Click here to try our payback calculator online](#)

[www.ESAseries.com](http://www.ESAseries.com) [info@esair.ca](mailto:info@esair.ca) 1 (855) 573-2877