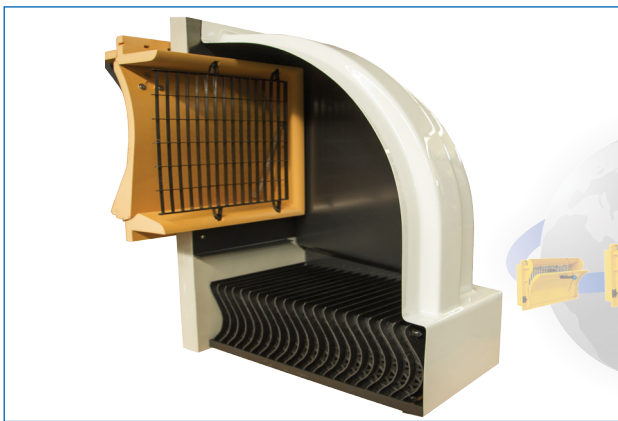




Wall air inlet »ZEW« Professional for all climate zones



»ZEW« Professional: Professional solution + savings on energy costs



The new universal wall air inlet »ZEW« Professional: One fresh air inlet for various buildings.



Wall air inlet »ZEW« Professional in practice

With the new »ZEW« Professional fresh air inlet, the minimum fresh air rates can be orientated entirely towards the needs of the animals.

Especially at outside temperatures below -10 °C / 14 °F ice can form at the air intake of the inlet. In order to maintain the functionality despite this, the inlet shutter is moved via the control (so-called forced ventilation) for example. However, this results in very cold fresh

air from outside flowing into the building, exceeding the air requirements of the animals.

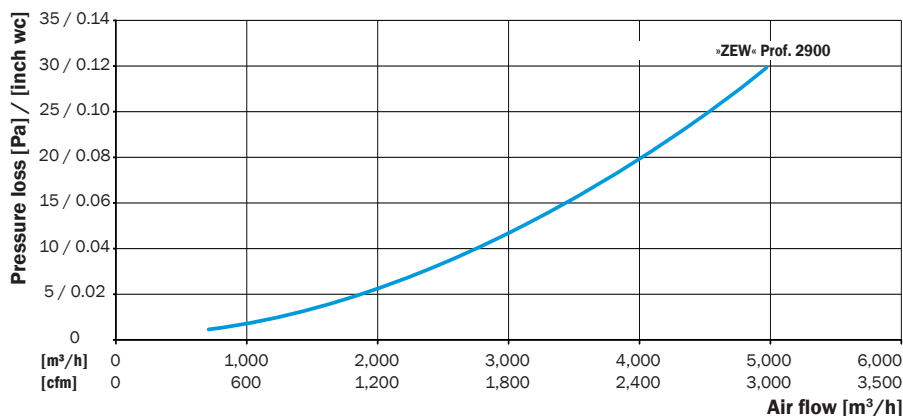
This is precisely where the innovative »ZEW« Professional fresh air inlet from REVENTA® comes into play.

Through its unique geometry, the coming together of cold fresh air and moist warm building air is displaced to areas in which no negative effects on functionality will occur.

Advantages:

- Significantly reduces the formation of ice even at extreme external temperatures
- Reduces energy costs massively by forgoing forced ventilation
- Spreads the temperature uniformly inside the building, as the minimum air rate can be geared solely to the requirements of the animals.

Air capacity »ZEW« Professional with protective bird grid





Fresh air
-33 °C / -27,4 °F
Functionality
significantly
improved!

Wall air inlet »ZEW« Professional the best for cold climate zones



Problem

Outside temperatures -33 °C / -27,4 °F:
completely iced up = malfunction



Solution

Outside temperatures -33 °C / -27,4 °F:
only mild ice formation = function assured

In the extreme climatic regions of US and Canada as well as during "hard winters" in the other climates, frozen fresh air inlets present major problems for livestock owners.

As such it has been exposed to extremes including outside temperatures of -33 °C / -27,4 °F in a broiler in northern Canada.

The results confirmed almost no ice formation. In advance of this, the »ZEW« Polar was subjected

to a range of tests under realistic conditions with temperature differences of 70K / 158 °F in our in-house climate chamber. The outstanding characteristics were also confirmed here. Freezing up is significantly reduced without having any negative effects on the air flows in the building.

A comprehensive accessory range including protective bird grid, wind deflection hood, actuator and special pulley incl. rope locking device complete the wall air inlet.

Accessories

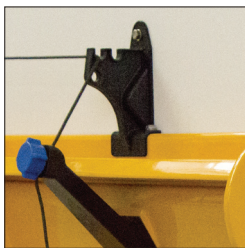


Sandwich wall - Variant

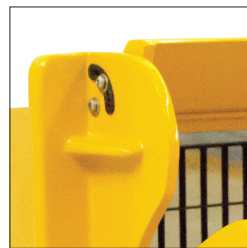
- 1 Pull rod
- 2 Pull rod clip
- 3 Pull rod wall guide
- 4 »ZEW« Professional 2.900
- 5 Wind deflection hood
- 6 Light filter

* Deviations reserved

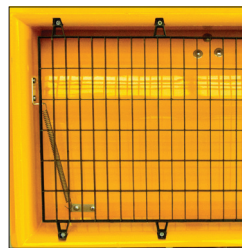
»Extras + accessories«



Pull rod wall guide



Air conduction sheet
individually adjustable



Bird protection grid

Type	Air flow*						External dimensions without flange		Internal dimensions		External dimensions light filter		Pulling forces		Stroke way	
	»ZEW« Profi 2900 wall air inlet only		with wind deflection hood + light filter		with wind deflection hood without light filter		mm	inch	mm	inch	mm	inch	N	lbf	mm	inch
a.o.	4,000	2,400	3,600	2,200	3,700	2,170	725 x 482 x 104	28.54 x 18.98 x 3.93	667 x 428	26.26 x 16.85	958 x 893 x 624	37.71 x 35.15 x 24.56	25	5.62	635	25.00
a.c.													60	13.49	480	18.90

*Air flow at 20 [Pa] / 0.08 [inch wc]