



Aluminium finned tubes »REV-AL« / »REV-AL«light

More heating capacity – less weight



»REV-AL« / »REV-AL«light finned tubes ensure comfortable warmth in the stable without creating their own air circulation. Due to the larger surface in comparison with the other tubes, the heating capacity is significantly improved and due to the fin arrangement, the flow between the spaces is optimal (e.g. with jet ventilation).

These systems are the ideal choice in particular for the preheating or for use in conjunction with diffusing fresh air systems. The »REV-AL« / »REV-AL«light finned tubes can be installed in

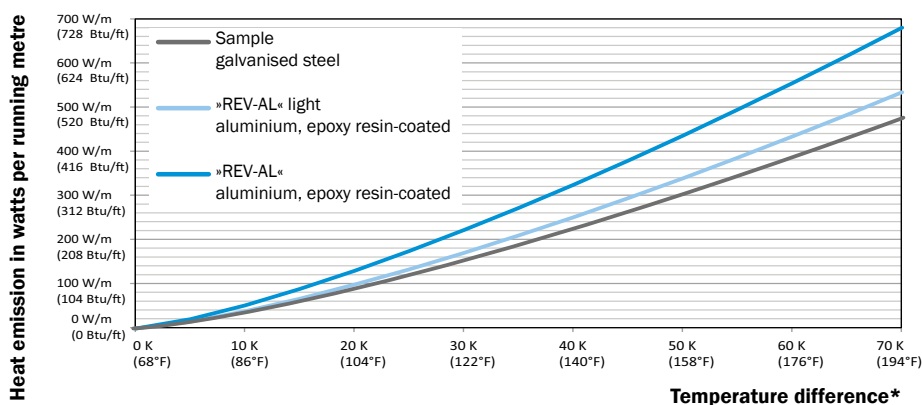
the immediate vicinity of the fresh air system for the heating of the incoming fresh air. A max. heat emission is achieved due to the large surfaces of the »finned tubes«. The pipes are manufactured of epoxy-coated aluminium and in addition to the lower weight, they are an ideal heat conductor. The smooth and epoxy-coated surface enables the easy cleaning of the »aluminium finned tubes« and are considerably more resistant against ammonia.

Dimensions and connections can be found on the back of the page.

ADVANTAGES

- up to 30% performance increase
- up to 85% weight reduction (when comparing steel with aluminium)
- 100% easy installation by means of connection clamps
- High radiated power due to epoxy-coated surface
- Energy-saving, made of aluminium with high heat conduction
- Optimised surface more watts per running metre (Btu per feet)
- Higher resistance against ammonia

Heat emission **»REV-AL«** / **»REV-AL«light** finned tubes



*Temperature difference = Average water temperature of flow and return to room temperature. The heat emission of the finned tubes has been measured in accordance with EN 442.





»Aluminium finned tubes« - lighter and more powerful

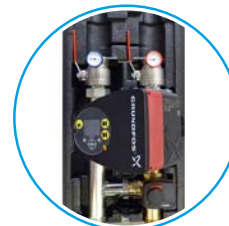
The finned tubes are available with a length of 1,000/1,800/2,800 and 5,000 mm (39,3/ 70,9/110,2 and 220,5 inch) and are therefore suitable for various applications. The connection is performed with standard 1.5" fittings. The individual pipes can be easily installed with connection clamps.

Heating pipes are often exposed to a high concentrations of ammonia in stables. The resistance against gaseous ammonia can differ greatly in different materials.



The test confirms that the »REV-AL« / »REV-AL«light finned tubes are resistant against the effects of the stable air for a service life of at least 20 years.

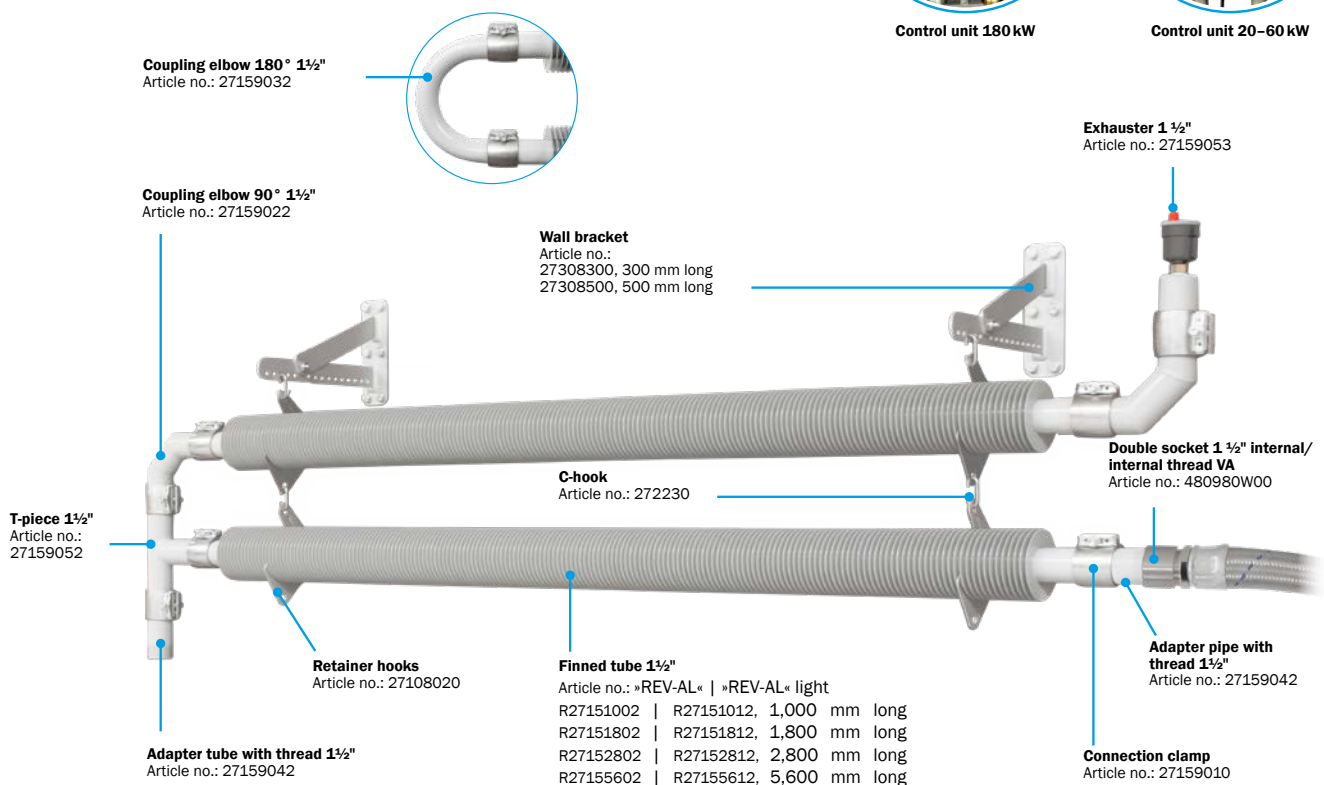
	Steel	»REV-AL«	»REV-AL« light
Heating capacity	100 %	130 %	100 %
Weight	100 %	- 80 %	- 85 %
Easy to assemble	—	✓	✓
Cleaning	☹	☺	☺



Control unit 180 kW



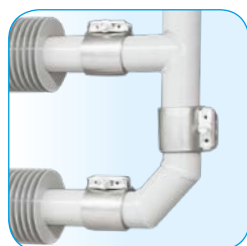
Control unit 20-60 kW



»Details + Hanging variants«



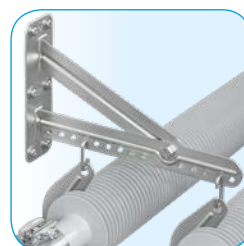
Connection clamp



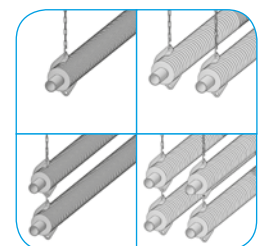
Coupling elbow 90°



Exhausters



Wall bracket



Hanging variants

Do you have any questions or do you require advice concerning your own projects? – We shall be happy to assist you:

REVENTA GmbH | Im Gewerbegebiet 3 | D-48612 Horstmar | Phone: +49(0)25 58 93 920 | www.reventa.de